

OmicsLink™ Anti-mCherry Antibody
Mouse Monoclonal IgG

Catalog Number

CGAB-RFP-0100 (100 µg)
CGAB-RFP-0050 (50 µg)

Description

Anti-mCherry antibody is a purified mouse IgG monoclonal antibody that binds to mCherry protein. Anti-mCherry antibody can be used to identify and capture mCherry or fusion proteins by western blots and immunoprecipitation. Immobilized anti-mCherry can also be used for affinity purification of mCherry fusion proteins. OmicsLink™ anti-tag antibodies are ideal for use with OmicsLink™ expression-ready ORF cDNA clones.

Immunogen

The OmicsLink™ anti-mCherry antibody was raised against a purified Red Fluorescent Protein (RFP, also known as DsRed) of *Discosoma sp.* origin.

Specificity

The anti-mCherry monoclonal antibody recognizes RFP (DsRed) and its variants including mCherry, plum, and probably other RFP-derived fluorescent proteins.

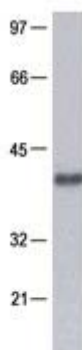


Figure 1. mCherry western blot analysis of 293 cells transfected with a fusion construct which contains a mCherry tag.

Formulation

0.25 mg/ml in PBS, pH 7.2 with 0.1% sodium azide and 50% (v/v) glycerol.

Applications

Western blot, ELISA, immunoprecipitation, immunostaining and affinity purification.

Storage/Stability

Stable for 1 year at -20°C from shipment date. Briefly centrifuge the original vial prior to opening the cap to collect the product at the bottom of the tube.

Starting dilution recommendations

Optimal working conditions should be determined by the user. General recommendations are western blot at 1:1,000; immunoprecipitation at 5 µg/mg lysate and immunostaining at 1:200.

GeneCopoeia, Inc.
9620 Medical Center Drive, #101
Rockville, Maryland 20850
Tel: 301-762-0888 Fax: 301-762-8333
Email: inquiry@genecopoeia.com
Web: www.genecopoeia.com