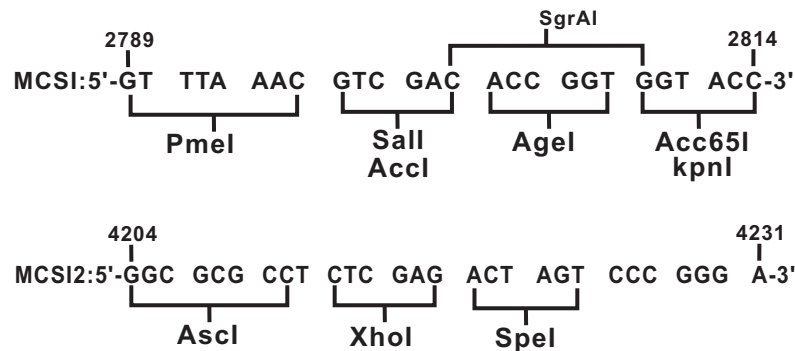
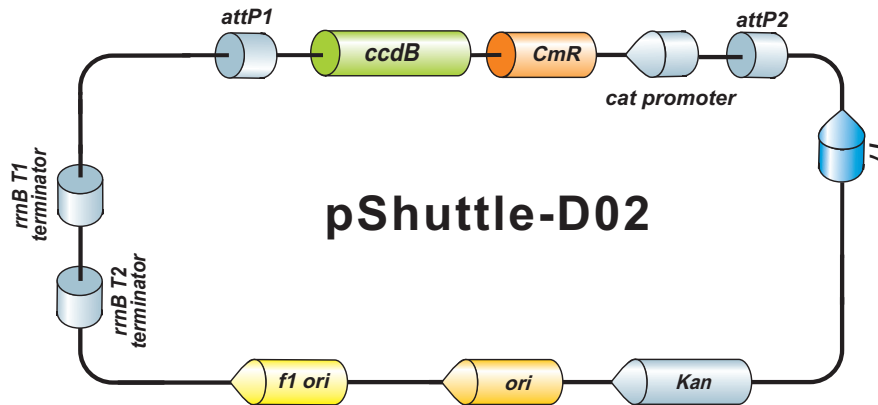


EZShuttle™ Recombination Cloning Shuttle cloning Vector pShuttle-D02

4231 bp, circular



Vector Features

Name	Position
attL2	1 100
Kanamycin resistance gene	270 1079
pUC ori	1226 1814
f1 ori	1881 2336
rrnB T1 terminator	2507 2593
attL1	2689 2788
MCS1	2789 2814
lac UV5 promoter	2825 2855
CmR	2909 3568
ccdB	3898 4203
MCS2	4204 4231

Sequencing Primers

Primer	Sequence
Forward	5'- tgtaaacgacggccagt -3'
Reverse	5'- caggaaacagctatgacc -3'

GeneCopoeia, Inc.
9620 Medical Center Drive, #101
Rockville, MD 20850
Tel: 301-762-0888 Fax: 301-762-3888
Email: inquiry@genecopoeia.com Web: www.genecopoeia.com

GeneCopoeia products are for research use only

© 2015, GeneCopoeia, Inc